




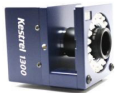
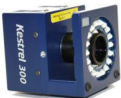
3D Motion Capture Systems

Features

Max Resolution up to 4096 x 3072
Max frames rates up to 810fps at VGA Resolution
Unlimited number of cameras for 3D motion capture Synchronisation
Collect 3D Motion capture data, analysis and post processing in a matter of minutes
Seamless multi-camera hardware integration, all streamlined into one Portable Control Console software suites via Ethernet connection




3D Motion Capture Camera Options

Raptor 12HS		The Raptor-12HS Digital RealTime System consists of Raptor-12HS digital cameras and Cortex software. At 12MP and operating at 300 fps at full resolution and up to 2,000 fps at windowed resolution, the Raptor-12HS is an excellent choice for large volumes with multiple subjects or where the need for very small markers is important
Kestrel 4200		The Kestrel 4200 is a compact, wide format camera capable of 200 fps with a sensor resolution of 2080 x 2048 pixels (4.2 million)
Kestrel 2200		The Kestrel 2200 is a compact, wide format camera capable of 300 fps with a sensor resolution of 2048 x 1088 pixels (2.2 million).
Kestral 1300		The Kestrel 1300 is a compact, wide format camera capable of 210 fps with a sensor resolution of 1280 x 1024 pixels (1.3 million).
Kestral 300		The Kestrel 300 is a compact, wide format camera capable of 810 fps with a sensor resolution of 640 x 480 pixels (0.3 million).

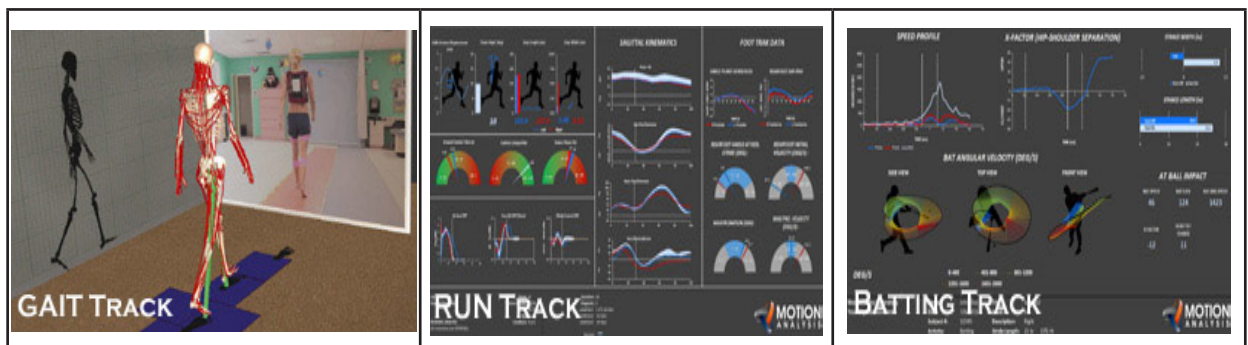


3D Motion Capture Systems



	Variety of 3D Motion Capture System Options				
	Raptor 12HS	Kestrel 4200	Kestrel 2200	Kestrel 1300	Kestrel 300
Frame size (megapixels)	12.5	4.2	2.2	1.3	0.3
Max resolution	4096x3072	2048x2048	2048x1088	1208x1024	640x480
FPS @ Max Res	300	200	300	210	810
Max FPS	2,000	9,500	10,000	6,100	6,800
Standard Lens	18-55mm Zoom	12.5mm, 12-36mm Zoom	8mm, 13-36mm Zoom	4-12mm Zoom	4-12mm Zoom
Ringlight Strobe type	Near IR (750nm)	Near IR (750nm) Full IR (850nm)	Near IR (750nm) Full IR (850nm)	Near IR (750nm) Full IR (850nm)	Near IR (750nm) Full IR (850nm)
Ringlight adjustable Illumination	Yes	Yes	Yes	Yes	Yes
Ringlight LED's	51 Surface Mount	36 Surface Mount	36 Surface Mount	36 Surface Mount	36 Surface Mount
Camera Weight	2.75Kg	0.57Kg	0.57Kg	0.57Kg	0.57Kg
Camera Size (mm)	145x201x175	86x80x90	86x80x90	86x80x90	86x80x90

Software Solutions



NAC Deutschland GmbH
 Hedelfingerstr. 54-70
 70327 Stuttgart
 Germany
 Tel: +49 (0)711 2201 885
 E-mail: rwestphal@nacinc.de
 www.nacinc.eu